

CATALYTIC CONVERTER

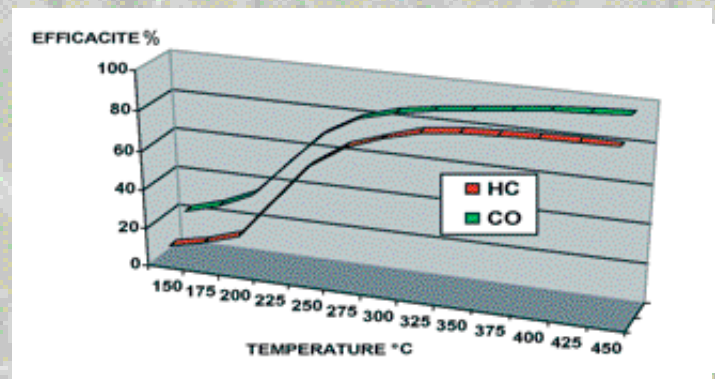
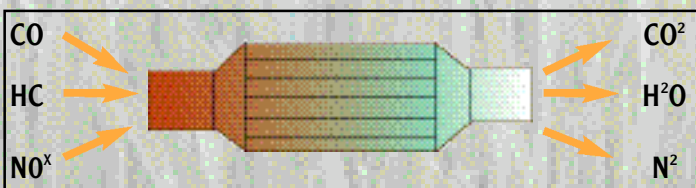
AIRCAT®

In an ideal engine the fuel would not mix with the air and would not completely burn, forming carbon gas and non toxic steam. The ideal engine does not exist and in all engines exhaust gases we can find the components bellow :

- Carbon monoxide CO: a toxic gas which can cause headaches, nausea, faint and even death if there is a large quantity of it.
- Unburnt hydrocarbons HC: releases a characteristic smell, e.g. diesel.
- Oxide nitrogen NOx: can inflame throat and nose, responsible for the green house effect.

When installing an AIRCAT catalyst, which dimensions are adapted to the engine, as close as possible to the exhaust manifold, a catalytic conversion of the pollutants at low temperature occurs.

The catalyst consists of a metallic substrate which resists to high



temperatures. Then this monolith is impregnated with a washcoat in alumina in order to increase its active surface and includes a treatment with precious metals (Platinum Pt - Rhodium Rh - Palladium Pd).

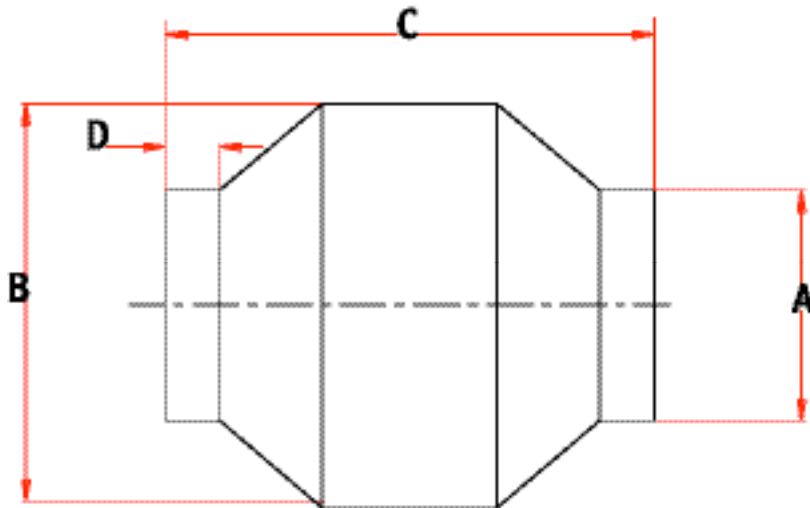
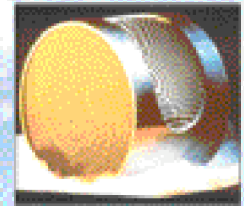
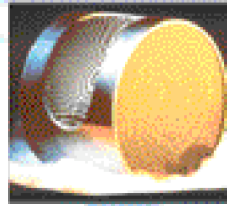
This active layer of precious metals creates a catalytic reaction with the flow of exhaust gas. Higher is the gas temperature, better toxic gases are reduced (reduction of 85% of the components).

The catalyst can either be assembled in the exhaust line or inserted in the former silencer or integrated in an AIRMEEX stainless steel silencer for OEM.

AIRMEEX catalysts from the AIRCAT range are up to emission standards.

Technical specification

CATALYTIC CONVERTER AIRCAT®



TYPE	Airmeex Code	Engine displacement in liter	Exhaust flow in m ³ /mn 2100 rpm@480 °C	ØA	ØB	C	D
AEDS 1	A500001	0 - 1	2,90	38.0	64	195	25
AEDS 2	A500002			44,5			
AEDS 2	A500003	0 - 2,5	5,70	50,8	74	210	25
AEDS 4	A500004			50,8			
AEDS 4	A500005	2,5 - 4	8,90	63,5	94	210	25
AEDS 6	A500006			63,5			
AEDS 6	A500007	4.0 - 6,5	14.0	76,2	131	220	25
AEDS 10	A500008			76,2			
AEDS 10	A500009	6,5 - 9,8	21,5	88,9			
AEDS 10	A500010			101,6	159	260	30
AEDS 13	A500013			114,3			
AEDS 13	A500014	9,8 - 13	28.0	127.0			
AEDS 13	A500015			152,4	178	260	30
AEDS 20	A500018	13 - 20	43.0	127.0			
AEDS 20	A500019			152,4	222	270	30
AEDS 33	A500021			127.0			
AEDS 33	A500022	20 - 33	77.0	152,4	304	340	40
AEDS 50	A500023			127.0			
AEDS 50	A500024	33 - 52	124	152,4	404	440	40