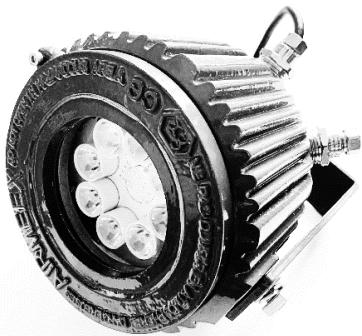
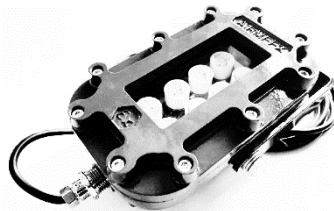
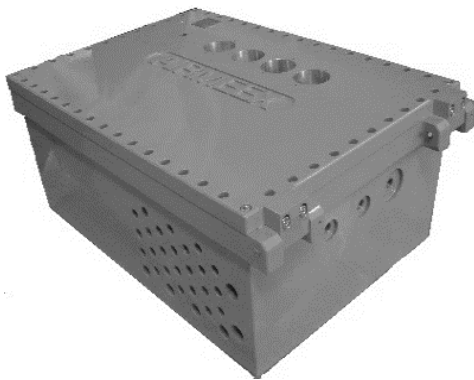


SAFETY EQUIPMENT FOR EXPLOSIVE ATMOSPHERES

ATEX

Zones I, 2, 21 and 22

Mines I M2



AIRMEEX, provides specific and turnkey solutions to each of its customers



Our company was founded in 1995.

We have two production centers allowing us to be responsive to the requests of our customers.

Our Design Offices allow us to meet the specific needs of our customers

We provide an end-to-end service, from the definition of the need to delivery, including design and manufacture

This organizational model allows us to be flexible and meet the time constraints of our customers while providing them with quality service and equipment compatible with the standards and regulations to which their activities subject them.

WHY CHOOSE US ?

Recognized expertise

A unique know-how,
An experienced team
Technical assistance, advice, repairs, ...

Full Service Offer

Turnkey offer, from design to manufacture, including training and after-sales service. Extension of Warranties.

Compliant Products

ATEX Quality Assurance Notification

Contact us

Quality, reactivity & confidentiality

www.airmeex-france.fr
contact@airmeex.com
+33 169 52 96 00

Please contact our sales department.

A team of professionals with great experience and the ability to answer all your questions



CUSTOMIZED AIRMEEX EXPLOSION BOXES

Zone 1, 2, 21, 22 et Mines M2

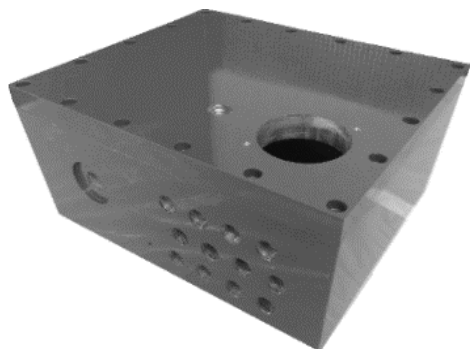
EXPLOSION PROOF BOXES

1

AIRMEEX explosion-proof enclosures.

Manufactured in aluminum, steel or stainless steel for the installation of non-ATEX electrical equipment in areas at risk of explosion .

Excellent corrosion resistance



Zone 1

Zone 2




Zone 21

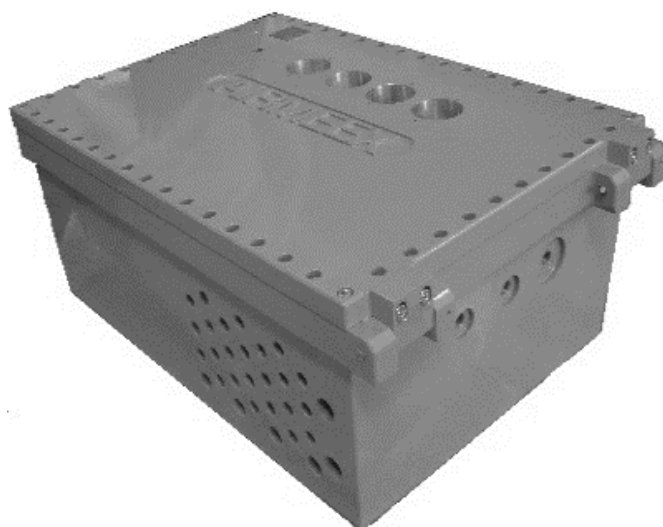
Zone 22

Mines I M2



SPÉCIFICATIONS TECHNIQUES

Type of protection :	 II 2G Ex db T6 Gb  II 2D Ex tb IIIC T85°C Db  I M2 Ex db I Mb
Certificate :	Type examination certificate
Body + lid :	Aluminium, steel or stainless steel
Operating Température :	-40°C à +85°C
Protection rating:	IP6X
Cable entries :	Metric NPT



The ATEX electric box is a custom manufacture taking into account the diameters, numbers and position of the cable inlets, or the type and quantity of accessories on the cover (push buttons, glass indicator, emergency stop buttons).

Contact | +33 1 69 52 96 00 | contact@airmeex.com

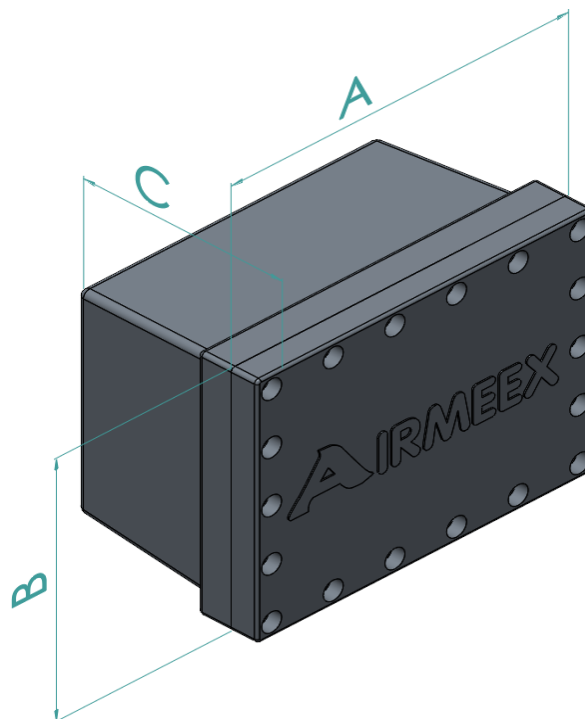
CUSTOM AIRMEEX EXPLOSION-PROOF ENCLOSURES

Zone 1, 2, 21, 22 et Mines M2

COFFRETS ANTIDÉFLAGRANTS

2

PRODUCTS REFERENCES						
Model	External Dimensions(mm)			Materials		
	A	B	C	Alu	Inox	Acier
AMK 1	220	140	105	X	X	X
AMK 2	260	200	85	X	X	X
AMK 3	260	200	125	X	X	X
AMK 4	300	200	190	X	X	X
AMK 5	300	250	125	X	X	X
AMK 6	300	250	175	X	X	X
AMK 7	330	170	110	X	X	X
AMK 8	330	220	185	X	X	X
AMK 9	360	270	250	X	X	X
AMK 10	360	310	140	X	X	X
AMK 11	390	290	185	X	X	X
AMK 12	390	290	245	X	X	X
AMK 13	420	320	185	X	X	X
AMK 14	420	320	265	X	X	X
AMK 15	460	230	185	X	X	X
AMK 16	460	300	210	X	X	X
AMK 17	460	360	270	X	X	X
AMK 18	550	210	130	X	X	X
AMK 19	550	310	150	X	X	X
AMK 20	580	380	215	X	X	X
AMK 21	580	380	265	X	X	X
AMK 22	620	220	90	X	X	X
AMK 23	620	430	235	X	X	X
AMK 24	620	430	305	X	X	X
AMK 25	670	470	330	X	X	X
AMK 26	710	510	190	X	X	X
AMK 27	710	510	290	X	X	X
AMK 28	850	600	310	X	X	X
AMK 29	850	650	280	X	X	X
AMK 30	850	650	380	X	X	X
AMK 31	880	520	190	X	X	X
AMK 32	880	520	250	X	X	X



X = Available

EXAMPLES



ACCESSORIES FOR ATEX EXPLOSIONS-PROOF BOXES

Zone 1, 2, 21, 22 et Mines M2

ACCESSORIES FOR ATEX EXPLOSIONS-PROOF BOXES

Buttons and crossed bulkhead

The electric button is manufactured in several versions: Aluminum, Steel (steel coated with electro zinc or Stainless steel) or bronze coated with nickel.

Emergency stop

Key button

Pushbutton

Selector Switch

Uni polar battery switch

Bipolar battery switch



Zone I

Zone 2

Zone 21

Zone 22

Mines I M2

ACCESSORIES FOR ATEX EXPLOSION-PROOF BOXES

Zone 1, 2, 21, 22 et Mines M2

ATEX cable glands and plugs for explosion-proof boxes

The parts of the cable glands are made of marine anodized aluminium, electro-nickel plated brass or stainless steel or electro-galvanized iron.

Caps are electro-nickel plated brass or stainless steel.

Cable gland reference table :

Références Presses étoupes	Couple body	Diameter Cable mm		diameter of cable	Couple Bolts
Type	N.m	« e »	« d »	Nbr	N.m
NPT 1/4	12 to 16	6 to 8	8	84	7.5
NPT 3/8	14 to 32	6 to 11	11	84	7.5
NPT 1/2 N°4	32 to 40	6 to 8	8	85	7.5
NPT 1/2 N°5	32 to 40	7 to 11	11	86	12.5
NPT 1/2 N°6	32 to 40	12 to 15	15	87	17.5
NOT 3/4	40 t 48	17 to 19	19	87	25



II 2GD
I M2

Table of caps references

References caps	Body	Couple caps
Type	NPT	N.m
AREX KP-1/4	1/4	7.5
AREX KP-3/8	3/8	7.5
AREX KP-1/2	1/2	12.5
AREX KP-3/4	3/4	18



The threading of the gland body and plugs is NPT type 1/4 " to 3/4 ".

EXPLOSION-PROOF LIGHTING DEVICES

Zone 1, 2, 21, 22 et Mines M2

Explosion-proof lighting devices ATEX

AIRMEEX Led explosion-proof lighting devices

AC / DC (220V / 12 and 24V).

Made of aluminium or bronze for use in hazardous areas.

Working light

Flashing beacon

Stop light

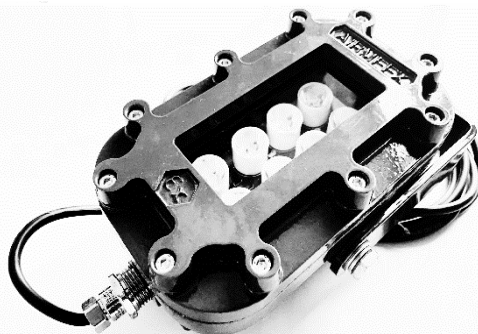
Back drive light

Fluorescents lights



II 2GD

I M2



The lights are composed of a body and a cover.

The light source is an LED lamp.

LED lamps color : white, yellow, red